

Machine

2000000000



1977 PARTS MANUAL

for

F.M.A.
225



VEHICLE IDENTIFICATION NUMBER
73-05BF01




WHEEL HORSE
lawn & garden tractors

Part No. 803701R1
(61571 - 5294-11)

MODEL NUMBERS

Soortgelijke machine.

Model and serial numbers are necessary to order parts. Riding Mower numbers are on a plate attached to the left rear of main frame between engine and fender; engine numbers are on a plate attached to the engine shroud.

A.M.F.
532
Kinderdelen te bestellen
67 Ja. Belen Schinnen
04493-1995

TO ORDER PARTS

1. Enter model and serial numbers.

	Vehicle Identification Number	Serial Number
Riding Mower	<u>73-05BF01</u> <i>Soortgelijke machine</i>	<u>Winston 11/32 = over Nice</u>
Engine	<u></u>	<u>Importeur De Graaff's Import & Machinehandel</u>
Differential	<u></u>	<u>Mitterweg 5-5 P. Brink.</u> <u>tel 05700-81791</u>

2. Locate the desired part in the illustration and note its item number.

3. Locate the item number in the parts list. Order by both part number and description.

ORDER ALL PARTS THROUGH YOUR LOCAL AUTHORIZED WHEEL HORSE DEALER.

At the time of printing, product information and specifications, as shown, were correct. Wheel Horse Products, Inc., reserves the right to change product specifications, designs and standard equipment without notice and without incurring obligation.

Tecumseh Products Company's Limited Warranty For New Peerless Gear Power Train Components

A. Products Warranted - Peerless Gear and Machine Division of Tecumseh Products Company ("Tecumseh"), subject to the limitations contained below, will, at its option, repair or replace, without charge for parts or labor only, any part or parts of a new Power Train Component (which as used herein means and includes the transaxle, gear box, transmission, differential and right angle drives, and any part of the Power Train Component), EXCEPT any new Power Train Component incorporated in equipment used for commercial or rental purposes which is found upon examination by any Tecumseh Authorized Service Outlet or by Tecumseh's factory at Grafton, Wisconsin to be DEFECTIVE IN MATERIAL AND/OR WORKMANSHIP if received by Tecumseh or a Tecumseh Authorized Service Outlet for such examination within ONE YEAR from the date of sale to the original consumer purchaser. New Power Train Components incorporated in equipment used for commercial purposes are warranted in the same manner and to the same extent EXCEPT such Power Train Components are warranted for NINETY (90) DAYS ONLY, and must be received by Tecumseh or by a Tecumseh Authorized Service Outlet for such examination within 90 days from the date of sale to the original consumer purchaser. New Power Train Components incorporated in equipment used for rental purposes are warranted in the same manner and to the same extent EXCEPT such Power Train Components are warranted for THIRTY (30) DAYS ONLY, and must be received by Tecumseh or a Tecumseh Authorized Service Outlet within 30 days from the date of sale to the original consumer purchaser.

B. Products and Items Not Warranted

1. Alterations or Modifications of Power Train Components.

All obligations under this warranty shall be terminated if the new Power Train Component is altered or modified in any way.

2. Accidents, Normal Maintenance, Failure to Follow Tecumseh's Instruction Manual.

This warranty covers only parts of new Power Train Components which are found upon examination to be defective in material or workmanship as delivered to the original consumer purchaser. This warranty does not cover defects caused by depreciation or damage caused by normal wear, accidents, improper maintenance, improper use or abuse of the product, failure to follow the instructions contained in an Instruction Manual for the operation of the Power Train Component and parts. The cost of normal maintenance and replacement of service items which are not defective, shall be paid for by the original consumer purchaser.

C. Securing Warranty Service - Warranty service can be arranged for by contacting either a Tecumseh Authorized Service Outlet (which includes a Tecumseh Registered Service Dealer; a Tecumseh Authorized Service Distributor; and a Tecumseh Central Warehouse Distributor) or by contacting Tecumseh, c/o Director of Servicing, Lauson Power Products Parts Depot, 900 North Street, Grafton, Wisconsin 53024. Warranty service can only be performed by a Tecumseh Authorized Service Outlet or by Tecumseh at its factory in Grafton, Wisconsin. At the time of requesting warranty Service, evidence must be presented of the date of sale to the original consumer purchaser. The purchaser shall pay any charges for making service calls and/or for transporting the product to and from the place where the inspection and/or warranty work is performed. The purchaser shall be responsible for any damage or loss incurred in connection with the transportation of Power Train Components and/or of part or parts of the Power Train Components submitted for inspection and/or warranty work.

D. No Additional Warranties or Representations - The foregoing EXPRESSED WARRANTY IS IN LIEU OF ALL OTHER EXPRESS WARRANTIES. Neither Tecumseh nor any of its affiliates makes any warranties, representations or promises, written or verbal, as to the quality of the Power Train Component or its part or parts other than those set forth herein.

ANY IMPLIED WARRANTY OF MERCHANTABILITY OR FITNESS FOR A PARTICULAR PURPOSE, TO THE EXTENT EITHER APPLIES TO PART OR PARTS OF POWER TRAIN COMPONENTS SHALL BE LIMITED IN DURATION TO THE PERIODS OF THE EXPRESSED WARRANTIES AS DEFINED IN PARAGRAPH A. Some states do not allow limitations on how long an implied warranty lasts, so the above limitation may not apply.

E. Damages - IN NO EVENT WILL TECUMSEH BE LIABLE FOR ANY INCIDENTAL, CONSEQUENTIAL OR SPECIAL DAMAGES AND/OR EXPENSES. Some states do not allow the exclusion or limitation of incidental or consequential damages, so the above limitation may not apply to you. This warranty gives you specific legal rights and you may have other legal rights which vary from state to state.

F. No Dealer Warranty - Tecumseh neither assumes nor authorizes any other person, natural or corporate, to assume for Tecumseh any other obligations or liabilities in connection with or with respect to any part or parts of a Power Train Component. The seller or dealer of part or parts of a Power Train Component has no authority to make any representations or promises on behalf of Tecumseh or to modify the terms or limitations of Tecumseh's warranty in any way. The seller or dealer makes no warranty of his own on any item not warranted by Tecumseh and makes no warranty on other items unless such seller or dealer delivers to the purchaser a separate written warranty document in which the seller or the dealer individually and specifically, on its own behalf, warrants the item.



TECUMSEH PRODUCTS COMPANY
PEERLESS GEAR & MACHINE DIVISION, Clinton, Michigan

For Service or Service Parts, contract any of our Tecumseh Authorized Service Dealers. You will find our dealers listed in the Yellow Pages of your telephone book under "Engines, Gasoline". If you have any difficulty at all, contact us.

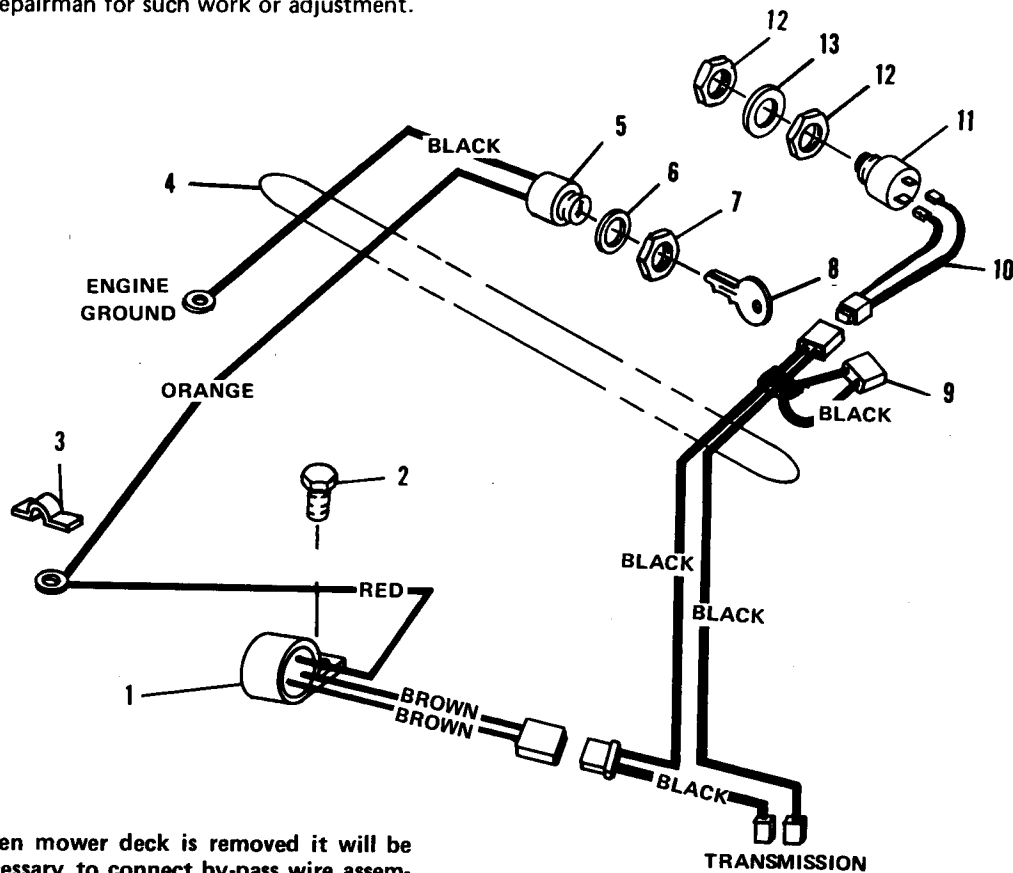


Parts Depot Division
Tecumseh Products Company
Grafton, WI 53024
Telephone: 414/377-2700

Wiring Diagram

This diagram is designed to be used as a wiring diagram.

We recommend that unless you are fully qualified to make repairs on the electrical system on this unit, you take it to a competent repairman for such work or adjustment.



NOTE: When mower deck is removed it will be necessary to connect by-pass wire assembly (No. 9) to main wire harness (No. 4) in order to start engine.

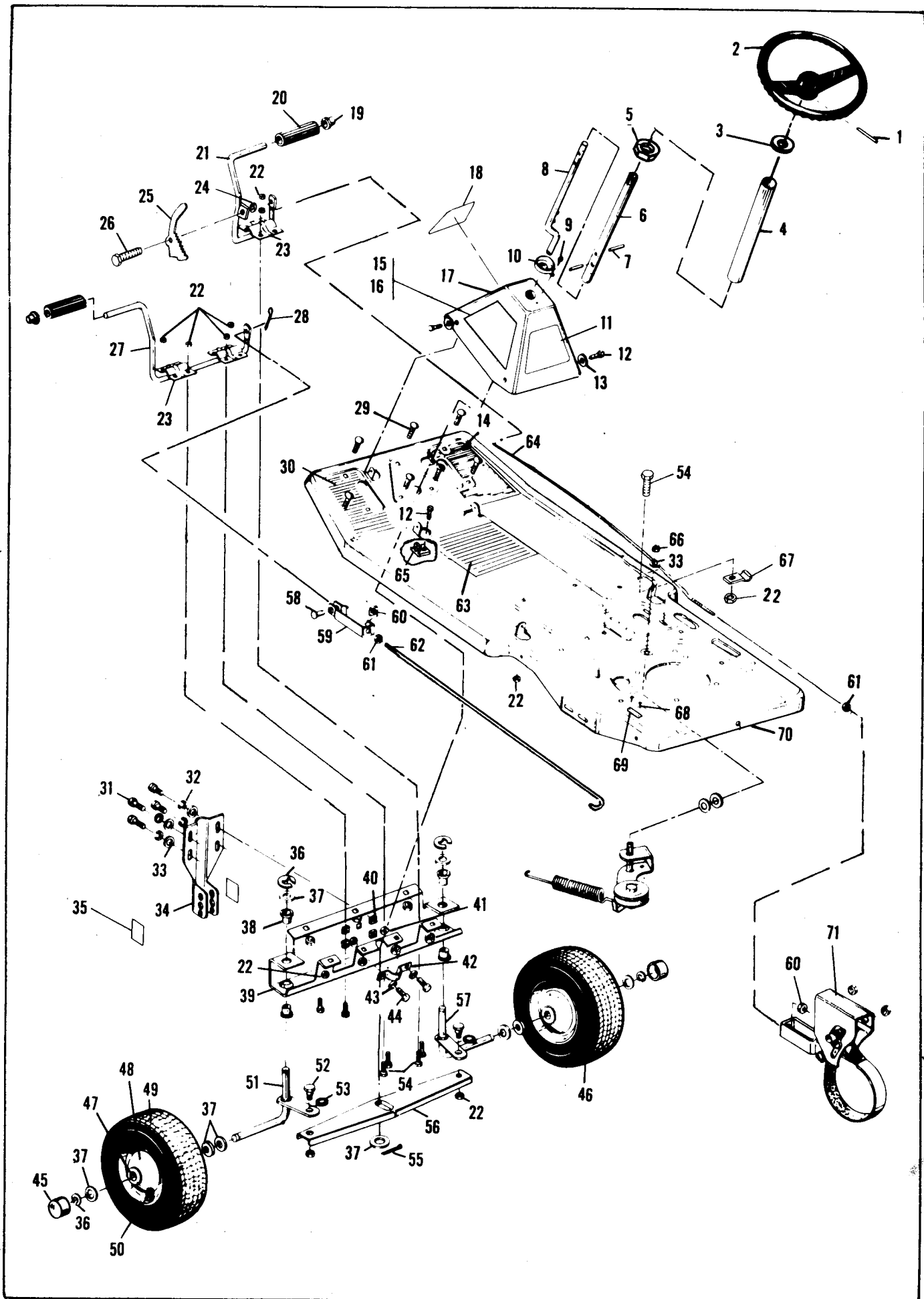
A-60 RIDING MOWER PARTS LIST

Parts available only through Authorized Dealers.

When ordering parts always list Part No. and Description.
(Specifications subject to change without notice.)

Key No.	Part No.	Description	No. Req'd
1	225121	Control Module	1
2	926565-4	*Screw, No. 10-32 x ½ In.	1
3	225103	Wire Clip, Press	1
4	225605	Wire Harness	1
5	225604	Switch, Ignition	1
6	920160-4	Lockwasher (Ignition Switch Part)	1
7	225620	Nut (Ignition Switch Part)	1
8	225573	Key, Ignition	1
9	225634	Wire Assembly, By-Pass	1
10	225109	Wire Assembly, Deck Switch	1
11	225097	Switch, Lockout	1
12	225398	Nut (Lockout Switch Part)	2
13	225399	Lockwasher (Lockout Switch Part)	1

*Standard Hardware Items - May Be Purchased Locally.



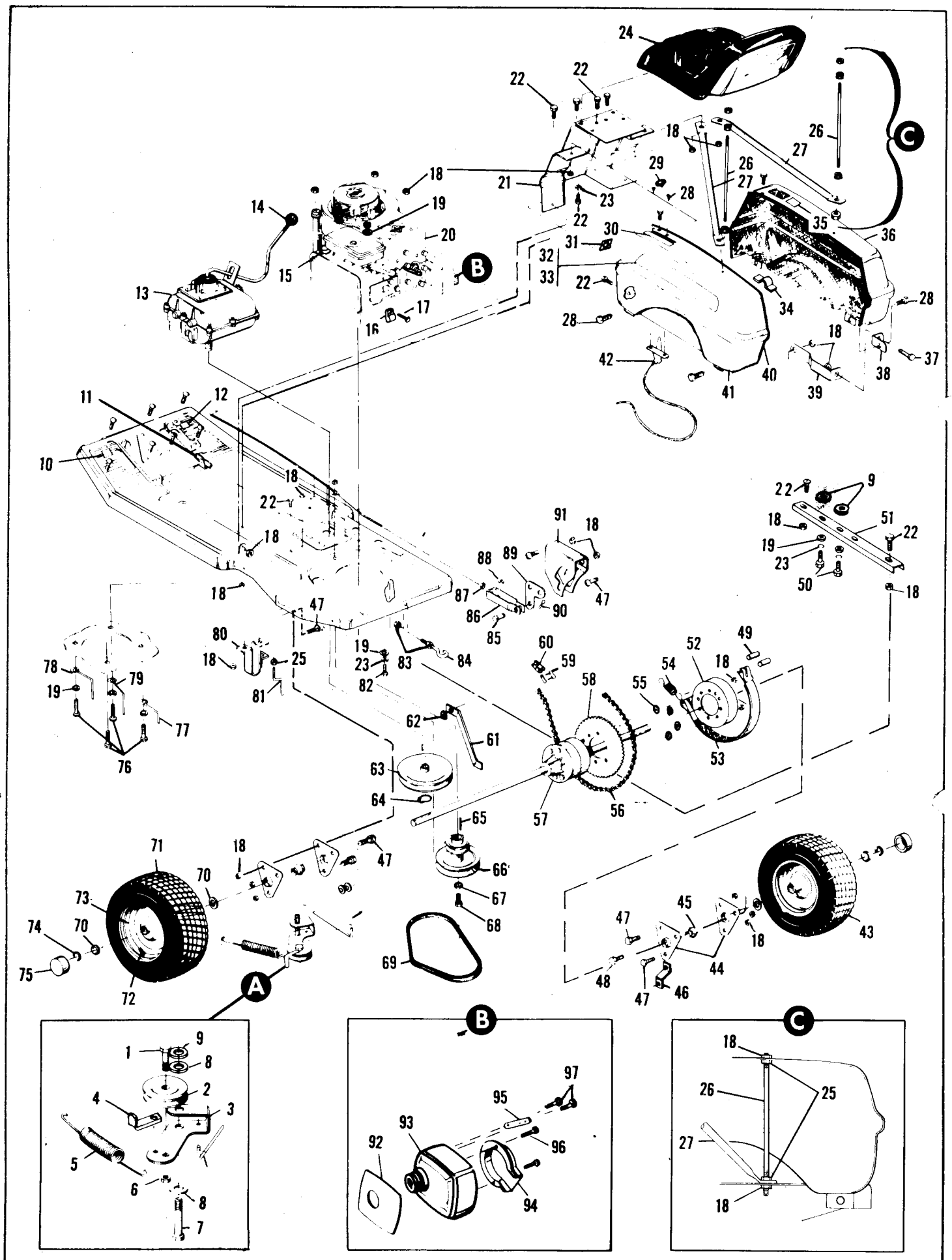
A-60 RIDING MOWER PARTS LIST

Parts available only through Authorized Dealers.
When ordering parts always list Part No. and Description.
(Specifications subject to change without notice.)

Key No.	Part No.	Description	No. Req'd
1	933222	Roll Pin, ¼ x 2¼ In.	1
2	225146	Steering Wheel	1
3	225433	Washer, Plastic	1
4	225408	Housing, Steering Tube	1
5	225434	Nut, Speed	1
6	225637	Tube, Steering	1
7	225487	Pin, Spiral	2
8	225266	Shaft, Steering	1
9	926565-4	*Screw, S.M., Type AB No. 10-16 x ½ In.	1
10	225271	Bushing, Steering Tube	1
11	225622	Decal, Instruction	1
12	926487-4	*Screw, Taptite, ¼-20 x 5/8 In.	8
13	920081-4	*Lockwasher, Split, ¼ In.	4
14	225621	Pad, Footrest, Right	1
15	225446	Decal, Console, R.H.	1
16	225447	Decal, Console, L.H.	1
17	225351	Console Assembly	1
18	225448	Decal, Console, Front	1
19	225324	Speed Nut, Push	2
20	225325	Pad, Pedal	2
21	225630	Arm, Brake Pedal	1
22	915112-6	*Locknut, Hex, 5/16-18 Thd	20
23	225263	Bracket, Pedal Rod	3
24	915111-6	*Locknut, Hex, ¼-20 Thd	1
25	225607	Latch, Parking Brake	1
26	225600	Shoulder Bolt	1
27	225269	Arm, Clutch Pedal	1
28	934761-4	*Cotter Pin, 3/32 x ¾ In.	1
29	900036-4	*Carriage Bolt, 5/16 x 18 x 5/8 In.	7
30	225477	Pad, Footrest, Left	1
31	908034-4	*Screw, Hex Hd Cap, 3/8-16 x 1 In.	1
32	920083-4	*Lockwasher, Split, 3/8 In.	4
33	920009-4	*Washer, Plain, 3/8 In.	5
34	225618	Bracket, Deck Hanger	1
35	225467	Decal, Deck Hanger	2
36	225021	"E" Ring	4
37	225008	*Flatwasher, 5/8 In.	9

Key No.	Part No.	Description	No. Req'd
38	225262	Bushing, Spindle	4
39	225289	Bracket, Front Axle	1
40	225321	Nut, Speed Grip, 3/8-16 Thd	4
41	225603	Nut, Speed Grip, 5/16-18 Thd	2
42	225152	"U" Bracket	1
43	920082-4	*Lockwasher, Spring, 5/16 In.	2
44	908032-4	*Screw, Hex Hd, 5/16-18 x ¾ In.	2
45	225087	Hub Cap	2
46	225422	Wheel & Tire Assy, Front, Complete Includes Items 43, 44, 45 & 46	2
47	225366	Bushing	4
48	225426	Wheel with Bearings	2
49	225367	Tire, 4.10 - 3.50 x 4	2
50	225031	Valve Stem	2
51	225279	Spindle, Steering Left	1
52	225028	Shoulder Bolt	2
53	225007	Washer, Spring	2
54	908016-4	*Screw, Hex Hd Cap, 5/16-18 x 5/8 In.	9
55	934826-4	*Cotter Pin, 3/16 x 1¼ In.	1
56	225283	Link, Steering	1
57	225278	Spindle, Steering Right	1
58	225602	Pin, Clevis	1
59	225633	Clevis	1
60	915182-4	*Nut, Square, ¼-20 Thd	2
61	915968-4	*Nut, Keps, ¼-20 Thd	1
62	225639	Rod, Clutch	1
63	225409	Pad, Footrest Center	1
64	225632	Rod, Brake	1
65	225619	Clip, Reinforcement	4
66	915113-6	*Locknut, Hex, 3/8-16 Thd	1
67	225610	Bracket, Rod Support	1
68	225479	Drive Screw, No. 6 x 5/16 In.	2
69	804016	Plate, Model Number	1
70	225606	Main Frame	1
71	225363	Brake, Assembly, Complete	1
72	803689	Tag, Warranty (Not Illustr.)	1

*Standard Hardware Items - May Be Purchased Locally.



A-60 RIDING MOWER PARTS LIST

Parts available only through Authorized Dealers.

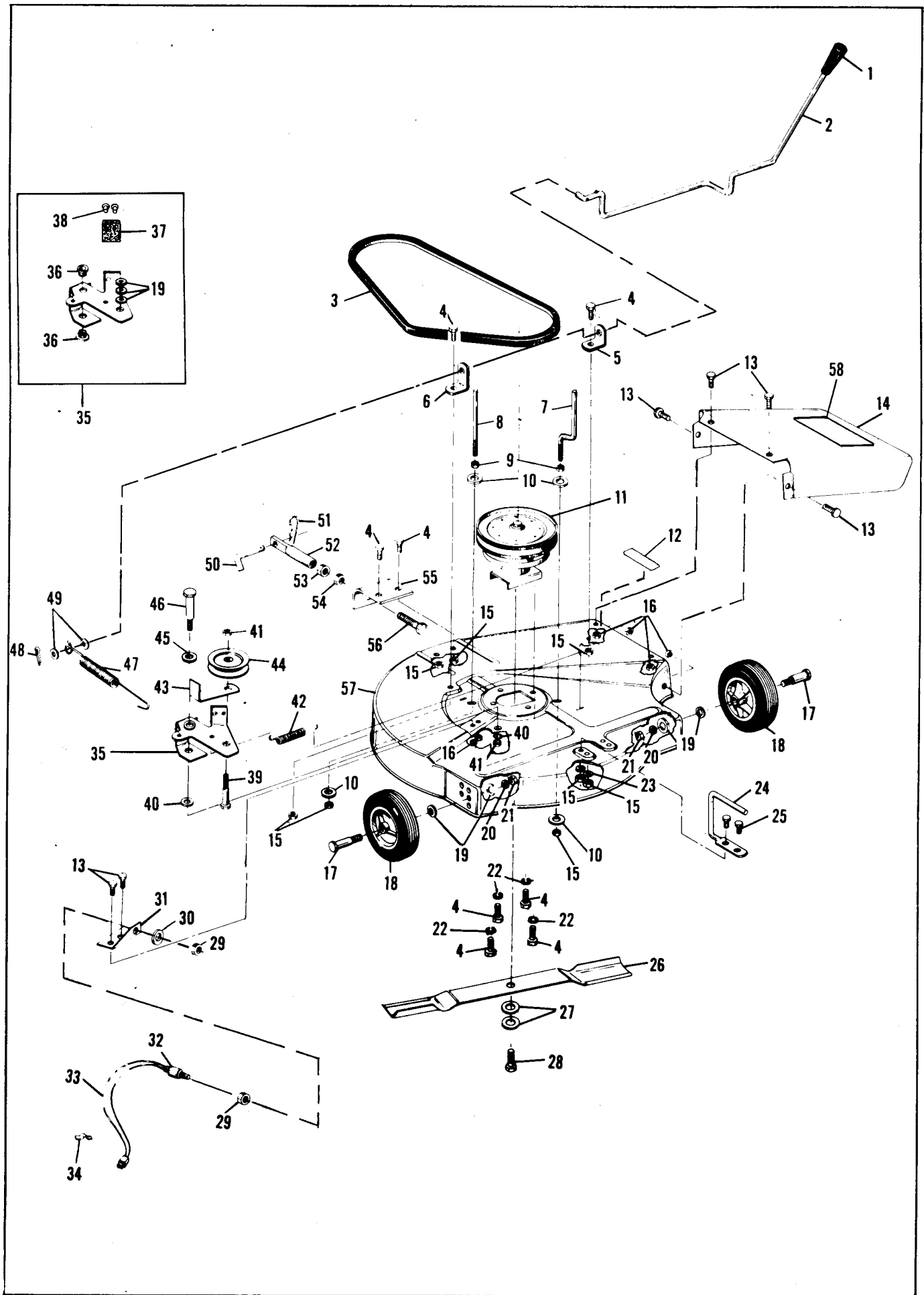
When ordering parts always list Part No. and Description.

(Specifications subject to change without notice.)

Key No.	Part No.	Description	No. Req'd
1	908036-4	*Screw, Hex Hd, 3/8-16 x 1½ In.	1
2	225050	Idler Pulley	1
3	225631	Idler Arm	1
4	225076	Retainer, Belt	1
5	225051	Spring, Traction Clutch	1
6	915113-6	*Locknut, Hex, 3/8-16 Thd	1
7	225027	Shoulder Bolt	1
8	225005	Washer	2
9	225001	Washer	3
10	225453	Decal, Clutch	1
11	225624	Decal, Parking Brake	1
12	225454	Decal, Brake	1
13	225608	Transmission, 3-Speed (See Separate List, Page 10)	1
14	225188	Knob	1
15	225232	Fuel Gauge	1
16	225040	Clip, Throttle Cable	1
17	911265-4	*Screw, Hex Hd, No. 10-32 x 5/8 In.	1
18	915112-6	*Locknut, Hex, 5/16-18 Thd	29
19	920210-4	*Flatwasher, 5/16 In.	9
20	225012	Engine	1
21	225616	Support, Seat	1
22	908016-4	Screw, Hex Hd, Cap, 5/16-18 x 5/8 In.	15
23	920082-4	*Lockwasher, Spring, 5/16 In.	8
24	225412	Seat	1
25	915972-4	*Nut, Keps, 5/16-18 Thd	5
26	225614	Rod, Fender Reinforcing	2
27	225326	Strut, Seat Support	2
28	926487-4	*Screw, Tapite, ¼-20 x 5/8 In.	6
29	225066	Knob, Throttle Control	1
30	225451	Decal, Throttle	1
31	225623	Decal, Ignition	1
32	225444	Decal, Body, R.H.	1
33	225445	Decal, Body, L.H.	1
34	225103	Press Clip	1
35	225450	Decal, Shift Pattern	1
36	225611	Fender, Right	1
37	908022-4	*Screw, Hex Hd, 5/16-18 x 1¼ In.	1
38	225323	Bracket, Chain Adjust	1
39	225413	Strap, Chain Adjust	1
40	225322	Edging	2
41	225612	Fender, Left	1
42	225284	Control, Throttle	1
43	225423	Wheel & Tire Assembly	2
44	225119	Bracket, Bearing Retainer	4
45	225049	Bearing, Self-Aligning	2
46	225358	Retainer, Brake Band	1
47	900036-4	*Carriage Bolt, 5/16-18 x 5/8 In.	7
48	900062-4	*Carriage Bolt, 5/16-18 x ¾ In.	1

Key No.	Part No.	Description	No. Req'd
49	933243	Roll Pin	2
50	908019-4	*Screw, Hex Hd, 5/16-18 x 1 In.	2
51	225613	Channel Stiffner	1
52	225330	Drum, Brake	1
53	225277	Brake Band Assembly	1
54	225059	Brake Return Spring	1
55	225601	Spacer	4
56	225337	Chain Assy (With Link)	1
57	225609	Differential, Peerless Model 172A (See Warranty, Page 2)	1
58	225298	Sprocket, 40 Tooth (Differential Part)	1
59	225019	Connector Link (Only)	1
60	225033	Link, Offset	1
61	225404	Belt Guide	1
62	915111-6	*Locknut, ¼-20 Thd	1
63	225057	Pulley, Transmission	1
64	225025	Snap Ring	1
65	225046	Key, Square, ¼ x ¼ x 1½ In.	1
66	225286	Pulley, Engine	1
67	920083-4	*Lockwasher, Split, 3/8 In.	1
68	908183-4	Screw, Hex Hd, 3/8-24 x 1 In.	1
69	225282	"V" Belt, 42-41	1
70	225000	Flatwasher	4
71	225296	Tire, 4.10 - 3.50 x 6	2
72	225031	Valve Stem	2
73	225427	Wheel	2
74	225054	"E" Ring	2
75	225088	Hub Cap	2
76	908021-4	*Screw, Hex Hd, 5/16-18 x 1½ In.	4
77	225355	Belt Guide	1
78	225339	Belt Guide	1
79	225359	Belt Guide	1
80	225362	Bracket, Clutch Spring Assy.	1
81	225403	Belt Guide	1
82	908032-4	*Screw, Hex Hd, 5/16-18 x ¾ In.	2
83	915113-4	*Nut, Hex, 3/8-16 Thd	2
84	225267	Eyebolt, Trailer Hitch	1
85	932121-4	Pin	1
86	225633	Clevis	1
87	915968-4	*Nut, Hex, ¼-20 Thd	1
88	915182-4	*Nut, Square, ¼-20 Thd	1
89	225331	Brake Lever	1
90	934761-4	*Cotter Pin, 3/32 x ¾ In.	1
91	225402	Brake Cam Plate Assy	1
92	225340	Heat Shield (Engine Part)	1
93	225341	Muffler, Lo-Tone	1
94	225344	Deflector, Muffler	1
95	225342	Lock Strip, Muffler Mounting	1
96	225345	Screw	2
97	225343	Screw	2

*Standard Hardware Items - May Be Purchased Locally.



A-60 RIDING MOWER PARTS LIST

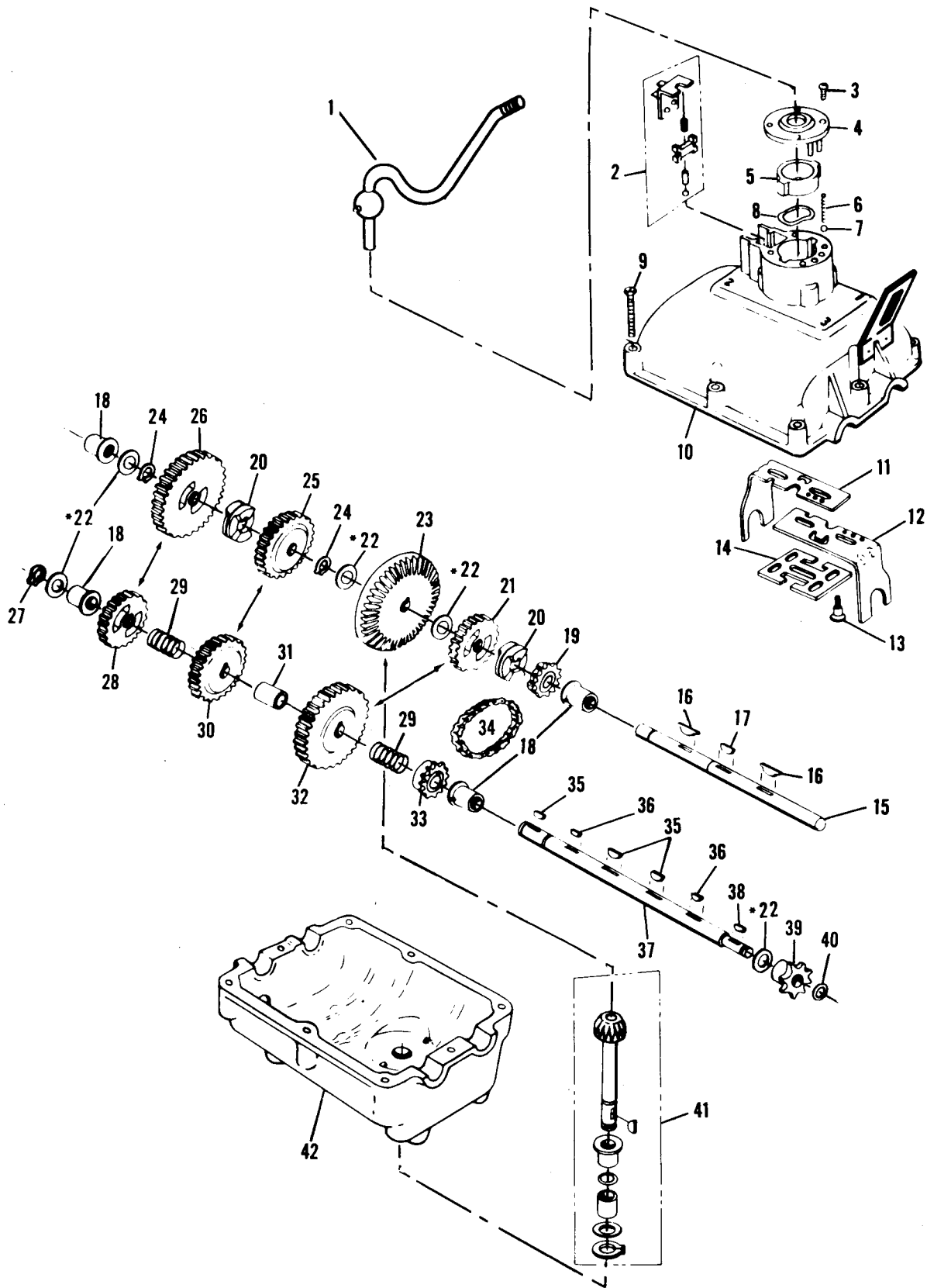
Parts available only through Authorized Dealers.
When ordering parts always list Part No. and Description.
(Specifications subject to change without notice.)

Key No.	Part No.	Description	No. Req'd
1	225006	Knob	1
2	225280	Rod, Clutch	1
3	225360	V-Belt, 4L-63	1
4	908016-4	*Screw, Hex Hd, 5/16-18 x 5/8 In.	8
5	225274	Bracket Assy, Clutch Lever	1
6	225275	Bracket, Rod	1
7	225108	Belt Guide	1
8	225254	Guide, Belt	1
9	915972-4	*Locknut, Keps, 5/16-18 Thd	2
10	920210-4	Washer	4
11	225636	Quill Assembly	1
12	225455	Decal, Caution, Blade Engage	1
13	908001-4	*Screw, Hex Hd, ¼-20 x ½ In.	6
14	225249	Chute Deflector	1
15	915112-6	*Locknut, Hex, 5/16-18 Thd	8
16	915111-6	*Locknut, ¼-20 Thd	6
17	225029	Shoulder Bolt	2
18	225079	Wheel	2
19	920009-4	*Flatwasher, 3/8 In.	7
20	920083-4	*Lockwasher, Split, 3/8 In.	2
21	915113-4	*Locknut, Hex, 3/8-16 Thd	2
22	920082-4	Lockwasher, Split	4
23	920038-4	Washer	2
24	225272	Guide, Rear	1
25	908018-4	Screw, Hex Hd, 5/16-18 x 7/8 In.	2
26	225077	Blade, 26 In.	1
27	225003	Spring Washer	2
28	225635	*Screw, Lock, Hex Hd, 3/8-24 x 1¼ In.	1
29	225398	Locknut (Switch Part)	2

Key No.	Part No.	Description	No. Req'd
30	225399	Lockwasher (Switch Part)	1
31	225255	Bracket, Safety Switch	1
32	225097	Switch, Safety	1
33	225109	Wire Assy, Safety Switch	1
34	225103	Wire, Press	1
35	225256	Arm Assembly, Idler	1
36	225044	Bushing	2
37	225102	Pad Brake	1
38	225107	Rivet, 3/16 x 1½ In.	2
39	908038-4	*Screw, Hex Hd, 3/8-16 x 2 In.	1
40	225488	*Flatwasher, 3/8 In.	2
41	915113-6	*Locknut, 3/8-16 Thd	2
42	225051	Spring, Brake	1
43	225076	Arm, Idler	1
44	225357	Pulley, Idler	1
45	920011-4	Washer, ½ In.	1
46	225002	Shoulder Bolt	1
47	225270	Spring, Mower Clutch	1
48	934761-4	Cotter Key	1
49	225048	Washer	2
50	225617	Pull Pin	1
51	225069	Hairpin Cotter	1
52	225253	Hitch, Deck Front	1
53	915240-6	*Locknut, Hex, 5/8-11 Thd	1
54	225258	Locknut, Jam, Hex, 5/8-11 Thd	1
55	225252	Plate, Front	1
56	225259	*Bolt, Hex Hd, 5/8-11 x 3½ In.	1
57	225248	Mower Deck	1
58	225629	Decal, Chute	1

*Standard Hardware Items - May Be Purchased Locally.

225608 TRANSMISSION ASSEMBLY COMPLETE



*INDICATES USED IN VARIOUS COMBINATIONS
TO MAINTAIN PROPER CLEARANCES.

A-60 RIDING MOWER PARTS LIST

Parts available only through Authorized Dealers.
When ordering parts always list Part No. and Description.
(Specifications subject to change without notice.)

Item No.	Part No.	Description	No. Req'd
	225608	Transmission Assembly Complete	1
1	225526	Shift Lever Assembly	1
2	225527	Switch Assembly, Kit	1
3	225528	Screw, Truss Hd, 10-24 x ½ In.	4
4	225529	Cover, Nylon	1
5	225530	Insert, Nylon	1
6	225531	Spring, Detent	2
7	225532	Ball, Detent	2
8	225533	Wave Washer	1
9	225534	Screw, Hex Hd, ¼-20 x 1-5/16 In.	8
10	225535	Housing, Upper	1
11	225536	Fork, Shifter, R.H.	1
12	225537	Fork, Shifter, L.H.	1
13	225538	Screw, Shoulder	4
14	225539	Plate, Shifter Lockout	1
15	225540	Shaft, Drive	1
16	225541	Key, Hi-Pro	2
17	225542	Key, Woodruff	1
18	225543	Bearing, Flange	4
19	225544	Sprocket, 12-Tooth	1
20	225545	Collar, Clutch	2
21	225546	Gear	1
22	225547	Washer .031 Thk	†
22	225548	Washer .040 Thk	†
22	225549	Washer .050 Thk	†

Item No.	Part No.	Description	No. Req'd
22	225550	Washer .060 Thk	†
22	225551	Washer .025 Thk	†
22	225552	Washer .035 Thk	†
22	225553	Washer .045 Thk	†
22	225554	Washer .020 Thk	†
23	225555	Gear, Bevel 42-Tooth	1
24	225025	Ring, Retaining	2
25	225556	Gear 25-Tooth	1
26	225557	Gear 30-Tooth	1
27	225021	Ring, Retaining	1
28	225558	Gear 20-Tooth	1
29	225559	Spring, Compression	2
30	225560	Gear 25-Tooth	1
31	225561	Spacer	1
32	225562	Gear 30-Tooth	1
33	225563	Sprocket, 12-Tooth	1
34	225564	Chain, 22 Pitches	1
35	225565	Key, Woodruff	3
36	225566	Key, Woodruff	2
37	225567	Shaft, Output	1
38	225568	Key, Woodruff	1
39	225640	Sprocket, 8-Tooth	1
40	225570	Ring, Retaining	1
41	225571	Input Shaft Assy, Kit	1
42	225572	Housing, Lower	1

†Used in various combinations to maintain proper clearance.



WHEEL HORSE
lawn & garden tractors

Printed in U.S.A. 0277

515 West Ireland Road, South Bend, Indiana 46614

Price \$2.00